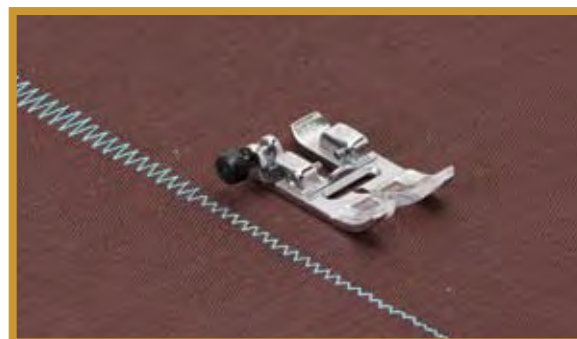


# BABY LOCK SEWING ACCESSORIES

## General Purpose Zig Zag Foot

(BLQ2-ZZ)

### Instructions

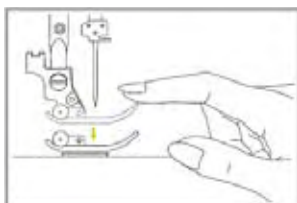


This presser foot is perfect for utility stitches and other standard functions. This is a great accessory to have on hand if your machine's original foot is misplaced.

#### INSTRUCTIONS:

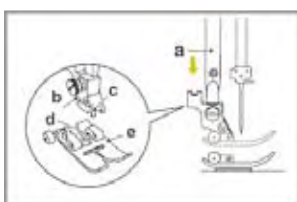
##### Removing the presser foot

Raise the presser foot (a).



##### Attaching the presser foot

Lower the presser foot holder (b) until the notch (c) is directly above the pin (d). Lower the presser foot holder (b) and the presser foot (e) will engage automatically.



**The Precision Dual-Feed** Quilting System (PDQ) feeds the fabric from the top and bottom simultaneously to ensure matching of the fabric layers, used for quilting layers of fabric and batting, and when matching checked, striped or plaid fabrics.

#### To Activate and Deactivate the Precision Dual-Feed Quilting System (PDQ)



To activate the PDQ system, raise the presser foot. Lower the PDQ mechanism slowly and swing the PDQ mechanism forward under the back of the presser foot until it is engaged and stays in the system. To deactivate the PDQ system, raise the presser foot, pull down on the mechanism and swing it to the rear then raise the PDQ up.

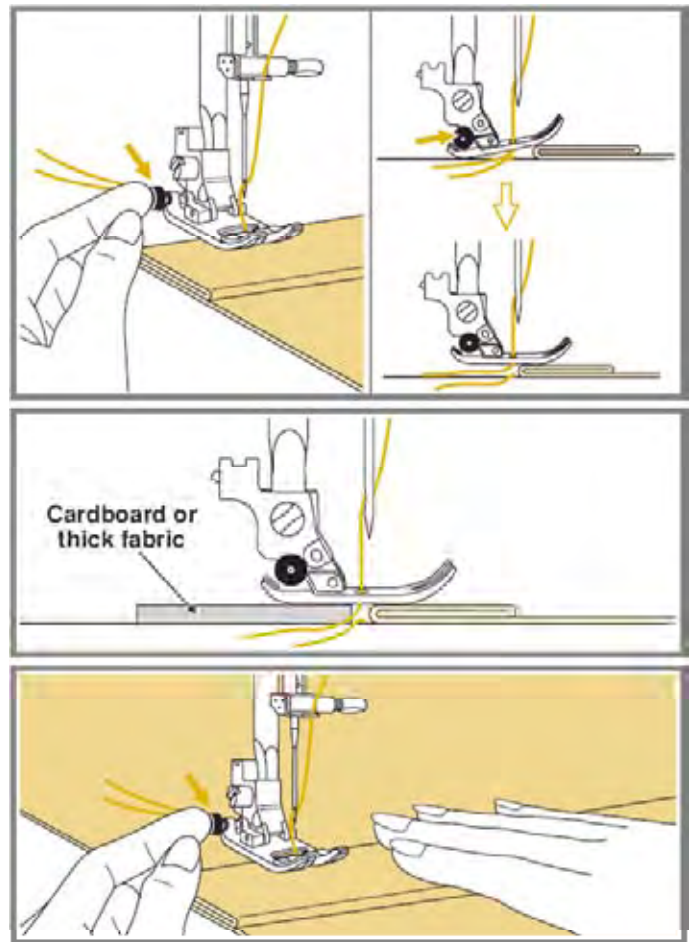


**FOR THE LOVE OF SEWING**

1. Select desired stitch.
2. With the presser foot attached place the fabric under the foot and lower the presser foot and sew.

### **Sewing on Heavy Fabrics**

3. The black button on the right side of the presser foot will lock the presser foot in a horizontal position if you push it in before lowering the presser foot.
4. This ensures even feeding at beginning of a seam and helps when sewing multiple layers of fabric such as sewing over seams when hemming jeans.
5. When you reach the point of an increased thickness, lower the needle and raise the presser foot. Press the toe of the presser foot and push in the black button then lower the foot and continue sewing.
6. The black button releases automatically after sewing few stitches.
7. You also can place another piece of fabric with the same thickness at the back of the seam.
8. Or support the presser foot while feeding by hand and sewing toward the folded side.



**FOR THE LOVE OF SEWING**

800-422-2952

[www.babylock.com](http://www.babylock.com)