

BABY LOCK SEWING ACCESSORIES

Stitch-in-the-Ditch Foot

(BLQ2-SDF)

Instructions

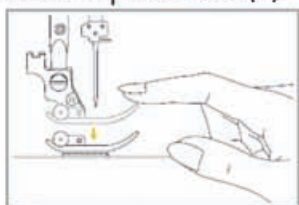


The Stitch-in-the-Ditch Foot with PDQ is designed to help you achieve perfect stitching in the pieced seam ditches on your quilt or for perfectly hidden stitching in the seams of any project.

INSTRUCTIONS:

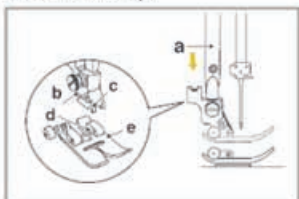
Removing the presser foot

Raise the presser foot (a).



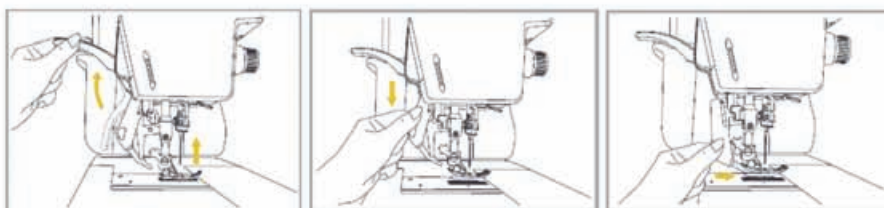
Attaching the presser foot

Lower the presser foot holder (b) until the notch (c) is directly above the pin (d). Lower the presser foot holder (b) and the presser foot (e) will engage automatically.



The Precision Dual-Feed Quilting System (PDQ) feeds the fabric from the top and bottom simultaneously to ensure matching of the fabric layers, used for quilting layers of fabric and batting, and when matching checked, striped or plaid fabrics.

To Activate and Deactivate the Precision Dual-Feed Quilting System (PDQ)



To activate the PDQ system, raise the presser foot. Lower the PDQ mechanism slowly and swing the PDQ mechanism forward under the back of the presser foot until it is engaged and stays in the system. To deactivate the PDQ system, raise the presser foot, pull down on the mechanism and swing it to the rear then raise the PDQ up.



FOR THE LOVE OF SEWING

1. Snap on the Stitch-in-the-Ditch Foot and engage the PDQ.
2. Select a center needle position straight stitch.
3. Place the quilt under the presser foot with the guide in the seam of the pieced quilt.
4. Stitch your lines with the guide of the presser foot following the center of the pieced seams. Keep the guide of the presser foot exactly in the center of the pieced seams.



FOR THE LOVE OF SEWING

800-422-2952

www.babylock.com