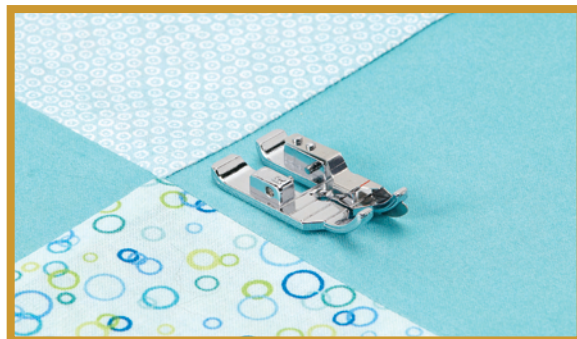


# BABY LOCK SEWING ACCESSORIES

## 1/4" Foot with Guide

(BLQ2-QGF)

### Instructions

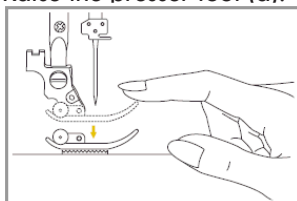


The 1/4" Foot with Guide is designed to help you achieve perfect 1/4" seams when piecing. Simply align the fabric edge next to the guide. The distance between the needle and the right guide is a true 1/4". The 1/4" Foot with a guide is also perfect for 1/4" topstitching from an edge.

#### INSTRUCTIONS:

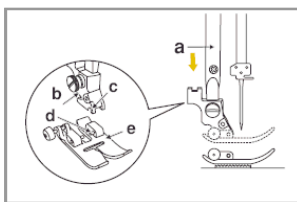
##### Removing the presser foot

Raise the presser foot (a).



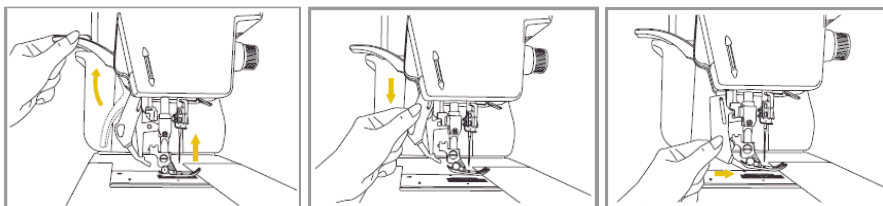
##### Attaching the presser foot

Lower the presser foot holder (b) until the notch (c) is directly above the pin (d). Lower the presser foot holder (b) and the presser foot (e) will engage automatically.

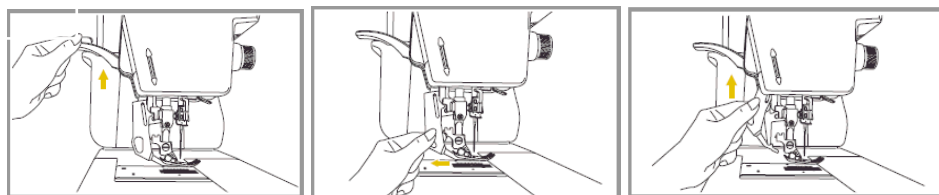


**The Precision Dual-Feed** Quilting System (PDQ) feeds the fabric from the top and bottom simultaneously to ensure matching of the fabric layers, used for quilting layers of fabric and batting, and when matching checked, striped or plaid fabrics.

##### To Activate and Deactivate the Precision Dual-Feed Quilting System (PDQ)



To activate the PDQ system, raise the presser foot. Lower the PDQ mechanism slowly and swing the PDQ mechanism forward under the back of the presser foot until it is engaged and stays in the system. To deactivate the PDQ system, raise the presser foot, pull down on the mechanism and swing it to the rear then raise the PDQ up.



**FOR THE LOVE OF SEWING**

1. Snap on the 1/4" Foot with Guide and engage the PDQ.
2. Select a center needle position straight stitch.
3. Place the fabric under the presser foot with the guide along the edge of the fabric(s).
4. Sew guiding the edge(s) so that it touches the right side of the guide forming a perfect 1/4" seam.



**FOR THE LOVE OF SEWING**

800-422-2952

[www.babylock.com](http://www.babylock.com)