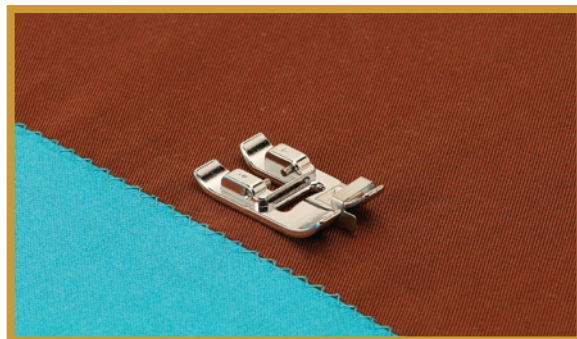


# BABY LOCK SEWING ACCESSORIES

## Edge Joining Foot

(BLQ2-EJF)

### Instructions

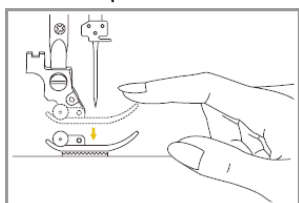


For even-sided stitching when joining two pieces of fabric, lace or trim, try this Edge Joining Foot. It is also great for narrow edge stitching.

#### INSTRUCTIONS:

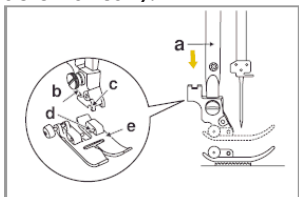
##### Removing the presser foot

Raise the presser foot (a).



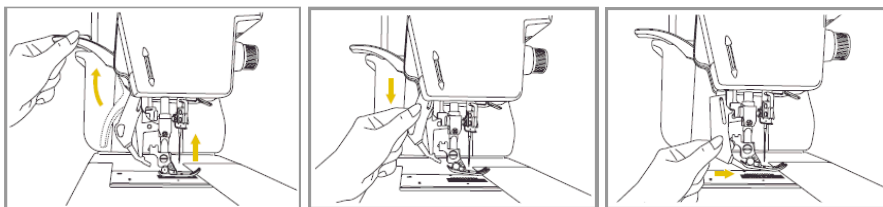
##### Attaching the presser foot

Lower the presser foot holder (b) until the notch (c) is directly above the pin (d). Lower the presser foot holder (b) and the presser foot (e) will engage automatically.

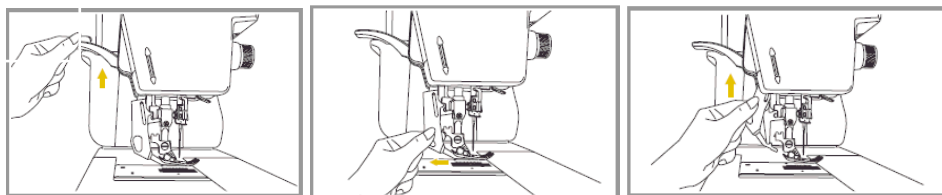


**The Precision Dual-Feed** Quilting System (PDQ) feeds the fabric from the top and bottom simultaneously to ensure matching of the fabric layers, used for quilting layers of fabric and batting, and when matching checked, striped or plaid fabrics.

##### To Activate and Deactivate the Precision Dual-Feed Quilting System (PDQ)



To activate the PDQ system, raise the presser foot. Lower the PDQ mechanism slowly and swing the PDQ mechanism forward under the back of the presser foot until it is engaged and stays in the system. To deactivate the PDQ system, raise the presser foot, pull down on the mechanism and swing it to the rear then raise the PDQ up.



**FOR THE LOVE OF SEWING**

1. Remove the presser foot. Attach the Edge Joining Foot and engage the PDQ.
2. Select a zigzag, couching, fagoting or other wide decorative stitch. The stitch length and width can be adjusted according to the type of stitch used.
3. Place one piece of fabric or lace with a clean-finished edge to the right of the guide and another to the left of the guide. This will allow the stitch to be evenly spaced on both sides.
4. When edge stitching, use a straight stitch and move the needle to the appropriate position from left to right and align the edge of the fabric with the guide.



**FOR THE LOVE OF SEWING**

800-422-2952

[www.babylock.com](http://www.babylock.com)