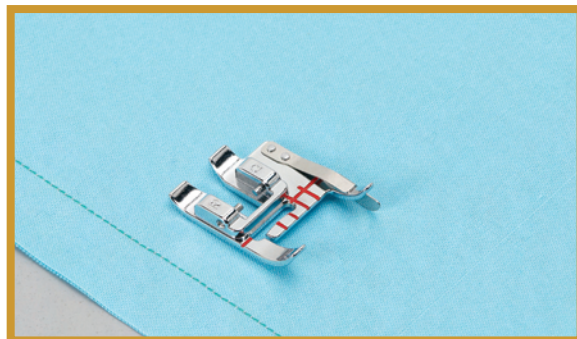


BABY LOCK SEWING ACCESSORIES

Edge Guide Foot - 5/8"

(BLQ2-EGF)

Instructions



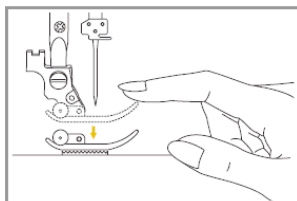
The 5/8" Edge Guide Foot has several uses. Not only can the foot be used to sew an exact 5/8" seam, it also has markings to be used to sew a perfect 1/8", 1/4", 3/8", 1/2" and 5/8" topstitching.

The Precision Dual-Feed Quilting System (PDQ) feeds the fabric from the top and bottom simultaneously to ensure matching of the fabric layers, used for quilting layers of fabric and batting, and when matching checked, striped or plaid fabrics.

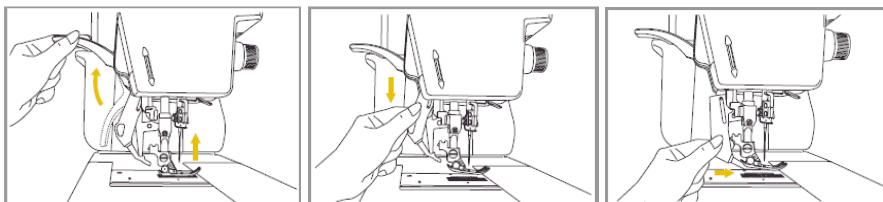
INSTRUCTIONS:

Removing the presser foot

Raise the presser foot (a).

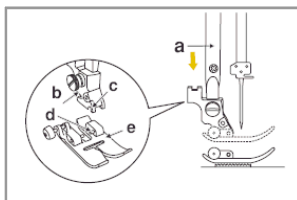


To Activate and Deactivate the Precision Dual-Feed



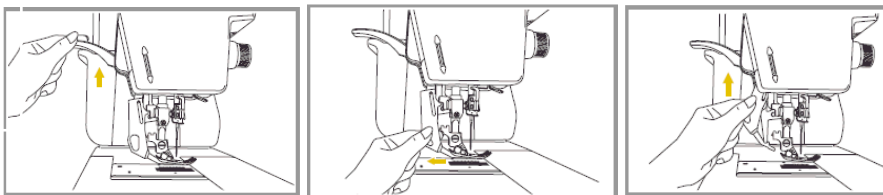
Attaching the presser foot

Lower the presser foot holder (b) until the notch (c) is directly above the pin (d). Lower the presser foot holder (b) and the presser foot (e) will engage automatically.



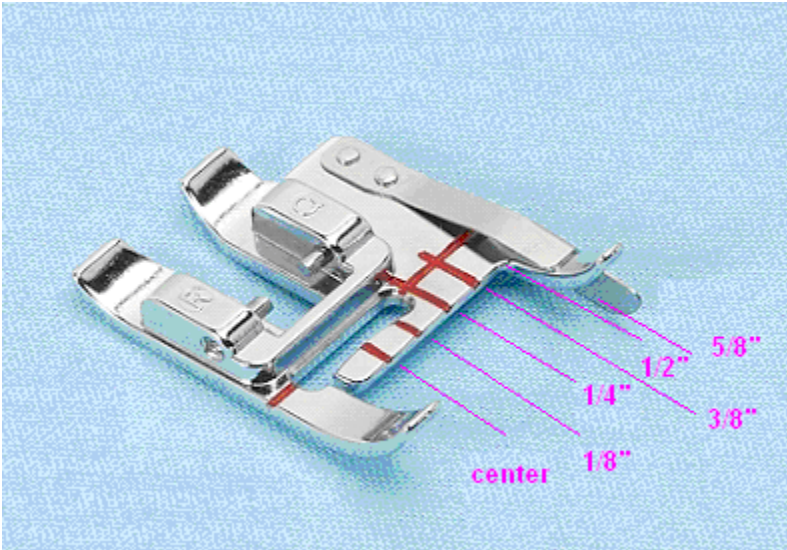
Quilting System (PDQ)

To activate the PDQ system, raise the presser foot. Lower the PDQ mechanism slowly and swing the PDQ mechanism forward under the back of the presser foot until it is engaged and stays in the system. To deactivate the PDQ system, raise the presser foot, pull down on the mechanism and swing it to the rear then raise the PDQ up.



FOR THE LOVE OF SEWING

1. Remove the presser foot.
2. Attach the 5/8" Edge Guide Foot and engage the PDQ.
3. Select a straight stitch, zigzag or decorative stitch.
4. You will see several seam guide markings on the foot. These markings are for center, 1/8", 1/4", 3/8", 1/2" and 5/8" increments.



FOR THE LOVE OF SEWING

800-422-2952

www.babylock.com