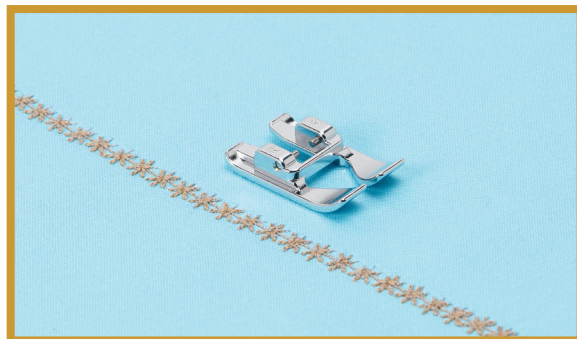


# BABY LOCK SEWING ACCESSORIES

## Decorative Stitch Foot

(BLQ2-DSF)

### Instructions

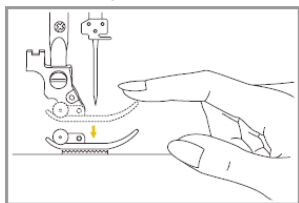


The Decorative Foot has a deep tunnel on the underside of the foot to aid the foot in feeding over a build-up of thread when using a utility or decorative stitch that repeats over itself or has high density.

#### INSTRUCTIONS:

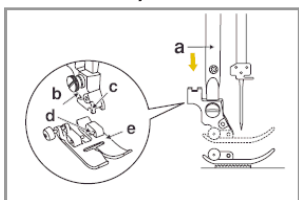
##### Removing the presser foot

Raise the presser foot (a).



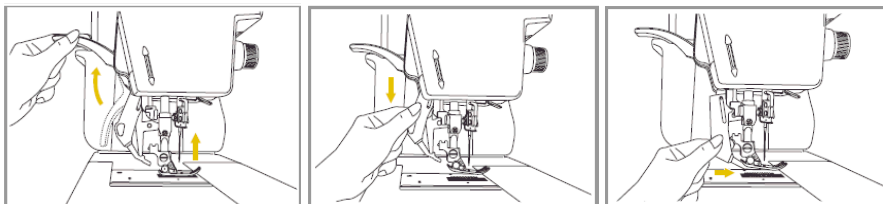
##### Attaching the presser foot

Lower the presser foot holder (b) until the notch (c) is directly above the pin (d). Lower the presser foot holder (b) and the presser foot (e) will engage automatically.

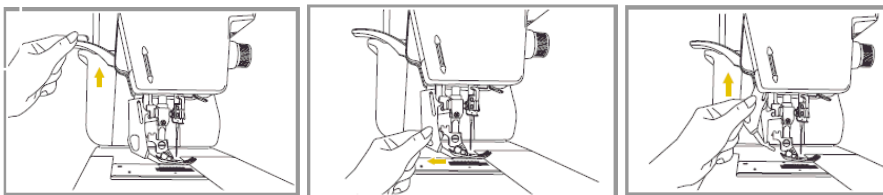


**The Precision Dual-Feed Quilting System (PDQ)** feeds the fabric from the top and bottom simultaneously to ensure matching of the fabric layers, used for quilting layers of fabric and batting, and when matching checked, striped or plaid fabrics.

#### To Activate and Deactivate the Precision Dual-Feed Quilting System (PDQ)



To activate the PDQ system, raise the presser foot. Lower the PDQ mechanism slowly and swing the PDQ mechanism forward under the back of the presser foot until it is engaged and stays in the system. To deactivate the PDQ system, raise the presser foot, pull down on the mechanism and swing it to the rear then raise the PDQ up.



**FOR THE LOVE OF SEWING**

1. Disengage Precision Dual-Feed Quilting System (PDQ) and remove the current presser foot.
2. Align and snap on the Decorative Foot.
3. Engage the PDQ. Select the desired stitch. Any of the utility or decorative stitches can be sewn with this foot.
4. Sew at a smooth and consistent speed.



**FOR THE LOVE OF SEWING**

800-422-2952

[www.babylock.com](http://www.babylock.com)