



“LETTERWORKS TEA TOWELS”



Create Quick and easy tea towels for any occasion. Custom lettering has never been easier than with Baby Lock Designer’s Gallery software.

Skill Level: Basic Software Knowledge

Created by: Diane Brown

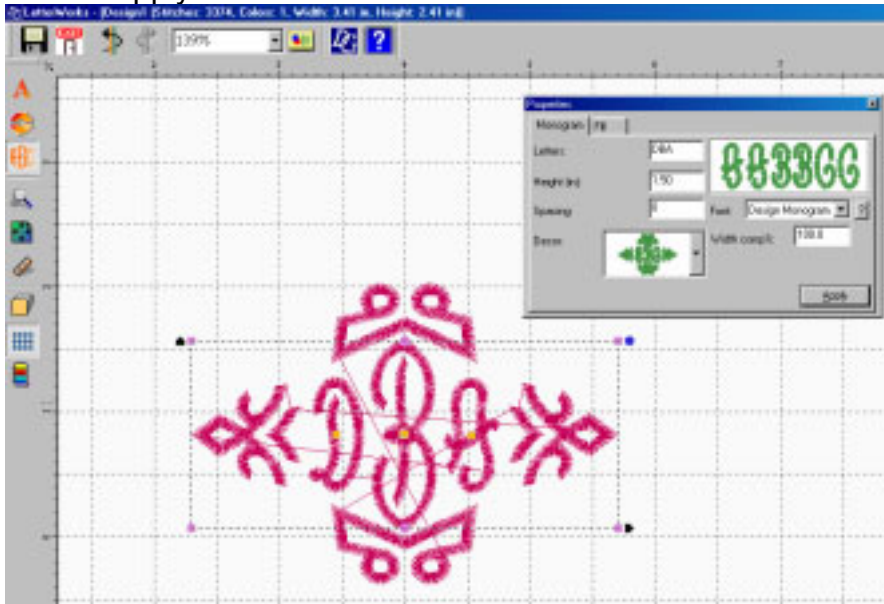
Supplies:

- Baby Lock Embroidery Machine
- Baby Lock Card Butterfly Scenes (BLEC-PO7)
- Baby Lock CD Florals in the Round (BLCD-E01)
- Baby Lock Card Jeannie Mooney Collection II Peace and Joy (BLEC-P02)
- Designer’s Gallery®
- Designer’s Gallery LetterWorks™
- Designer’s Gallery SizeWorks™
- Designer’s Gallery Density Works
- Purchased Linen tea towels
- Assorted colors embroidery thread
- Bobbin thread
- Stabilizer
- Palette software

Instructions:

Monogram towel:

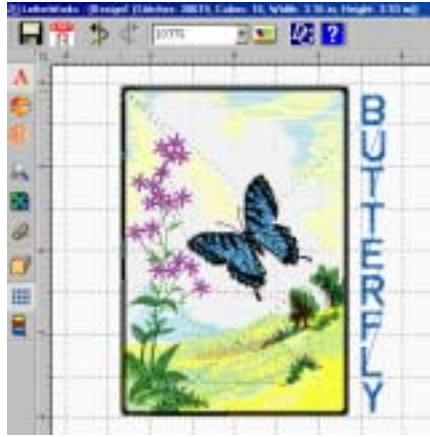
1. Open Designer's Gallery and go to "Gallery tools" then LetterWorks.
2. Click on the monogram tool (3rd icon on left tool bar).
3. Change the properties. Enter the letters of your monogram, select the Design monogram font, change the height to 1.5 inches, select the decor, and apply.



4. Save this file. Exit Designer's Gallery LetterWorks.
5. Then save this file onto a floppy disk.
6. Transfer the design to a memory card if required by your machine model.
7. Embroider the tea towel, using proper stabilizing techniques.

Butterfly scene towel:

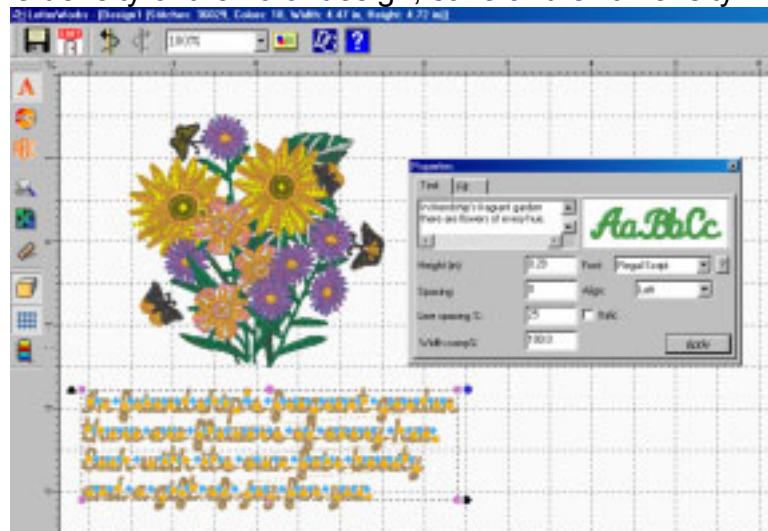
1. Using the Palette software upload the butterfly background scene and butterfly to a file. Remember where you saved them.
2. Open Layout & Editing.
3. Import the scene. Then import the butterfly.
4. Position the butterfly over the scene as desired.
5. Save the combined design.
6. Open Designer's Gallery and browse to find the combined scene.
8. Select the file and go to "Gallery tools" then LetterWorks.
9. Select a block font.
10. Type "B" enter then "U" enter and so on until you have typed the word BUTTERFLY with the enter key after each letter. This will make the word appear vertical.
7. Align the word to the right of the butterfly scene. Resizing the text as necessary.



8. Save this design in LetterWorks and exit to Designer's Gallery.
9. Then save this file onto a floppy disk.
10. Transfer the design to a memory card if required by your machine model.
11. Embroider the tea towel, using proper stabilizing techniques.

Floral Towel with poem:

1. Save design #10 from Florals in the Round CD to a file. Remember where you saved it.
2. Open Designer's Gallery and browse to find the floral design.
3. Select the file and go to "Gallery tools" then SizeWorks.
4. Resize the design to 3" tall, save and exit SizeWorks.
5. Select the file and go to "Gallery tools" then DensityWorks.
6. Adjust the density of the floral design, save and exit DensityWorks.



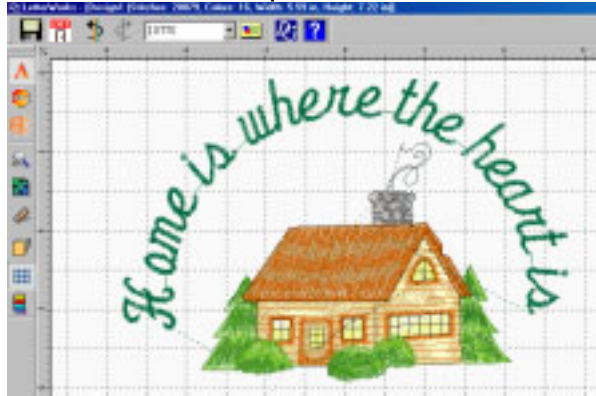
7. Select the file and go to "Gallery tools" then LetterWorks.
8. Using the text tool, enter in the poem.

In friendship's fragrant garden
 there are flowers of every hue.
 Each with its own fair beauty
 and a gift of joy for you.
9. Choose the Regal Script font and change the height to 0.28 inches and apply.

10. Position the text centered under the floral design.
11. Save this design in LetterWorks and exit to Designer's Gallery.
12. Then save this file onto a floppy disk.
13. Transfer the design to a memory card if required by your machine model.
14. Embroider the tea towel, using proper stabilizing techniques.

Basket Lid:

1. Using the Palette software upload the cottage design to a file. Remember where you saved it.
2. Open Designer's Gallery and browse to find the cottage design.
3. Select the file and go to "Gallery tools" then LetterWorks.
4. Using the circle tool, enter in the phrase "Home is where the heart is".



5. Choose the style script font and apply.
6. Measure the lid to your basket, and adjust the size of your lettering.
7. Position the text centered over the cottage design.
8. Save this design in LetterWorks and exit to Designer's Gallery.
9. Then save this file onto a floppy disk.
10. Transfer the design to a memory card if required by your machine model.
11. Embroider on the desired fabric, and then recover the basket lid.

For other exciting projects like this one visit our Web site at www.babylock.com