

## Simply Trims Décor Easter Egg

Plan your Easter decorating around a one-of-a-kind Easter Egg table runner using Simply Trims from Designer's Gallery Interactive Embroidery.

**Skill Level:** Intermediate

**Created by:** Kendra Wilson, Product Development Manager

### **Supplies:**


Designer's Gallery® Simply Trims Interactive Embroidery Collection  
Baby Lock® embroidery and sewing machine  
Baby Lock® Dissolve-Away Mesh Stabilizer  
Madeira® Rayon machine embroidery thread  
Sewing with Nancy® *Easter Egg Parade Table Décor* book  
One 18" x 22" rectangle fabric – a pastel batik is nice  
One 18" x 22" flannel fabric – pastel or Easter print  
Pattern tracing paper  
Rotary cutter, mat and ruler  
Scissors  
Pencil  
Sewing thread to match your batik fabric  
Straight pins  
Clear monofilament thread




### **Instructions**

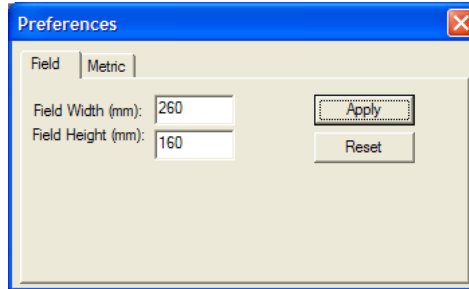
#### **At the Computer:**

In the following instructions, we have created eight trims with Simply Trims. Use your creativity to go beyond these instructions and make the trim that best fits your style.

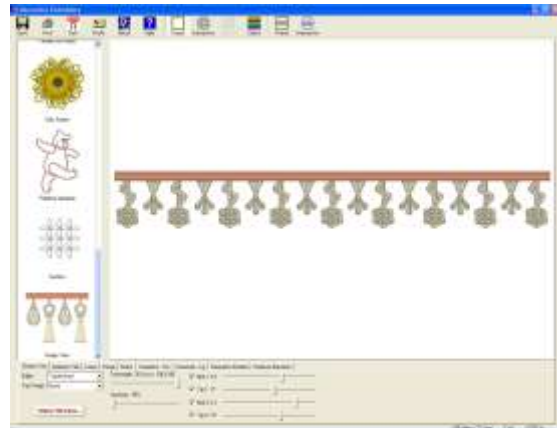
1. Open the program by clicking on the Interactive  desktop icon.
2. Select the Simply Trims Interactive from the left side scroll bar.



3. Under Preferences  select the largest hoop for your embroidery machine and click Apply.

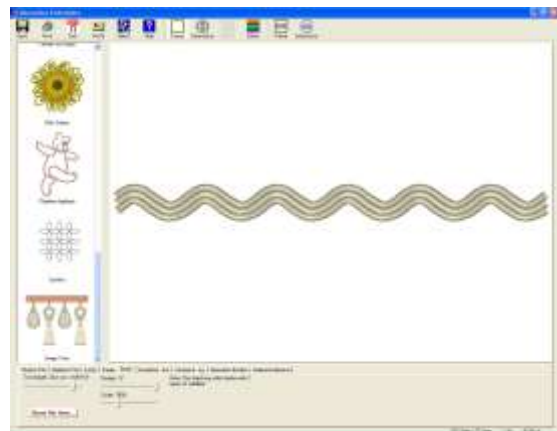



4. For the first row of trim:
- Select the Charms Trim tab across the bottom of the screen
  - Set the trim length to fill your hoop
  - Set Edge at Topstitched
  - Set Top Fringe at None
  - Set Spacing at 20%
  - Set Mid 1 at 10
  - Set Tip 1 at 17
  - Set Mid 2 at 12
  - Set Tip 2 at 19



5. Click the Save  icon. Name the file trim 1 and save it in your machine format.

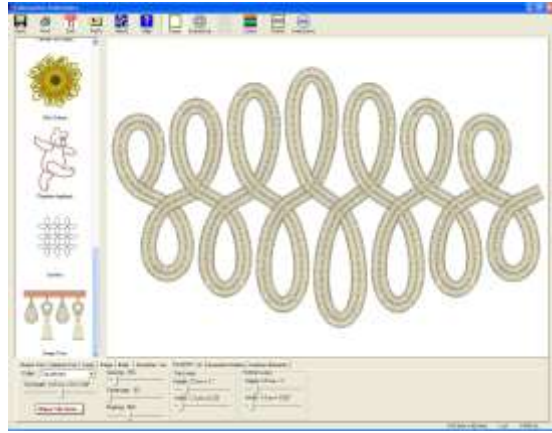
6. For the second row of trim:
- Select the Braid tab across the bottom of the screen
  - Set the trim length to fill your hoop
  - Set Design at 12




7. Click the Save  icon. Name the file trim 2 and save it in your machine format.

8. For the third row of trim:

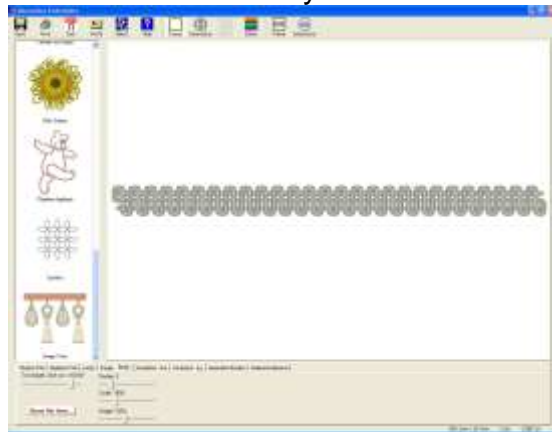
- Select the Soutache – Lg. tab across the bottom of the screen
- Set the Edge at Topstitched
- Set the trim length to 14.5 cm = 5(11/16)”
- Set the Spacing at 75:
- Set the Center gap at 0%
- Set the Peaking at 56%
- Set the Top and Bottom Loops to the same:
  - i. Height: 2.5 cm = 1”
  - ii. Width: 1.3 cm = (1/2)”




9. Click the Save  icon. Name the file trim 3 and save it in your machine format.

10. For the fourth row of trim:

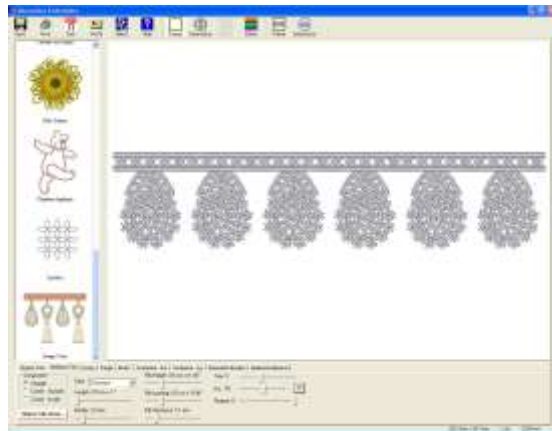
- Select the Braid tab across the bottom of the screen
- Set the trim length to fill your hoop
- Set Design at 3
- Set Scale at 100%
- Set Height at 100%




11. Click the Save  icon. Name the file trim 4 and save it in your machine format.

12. For the fifth row of trim:

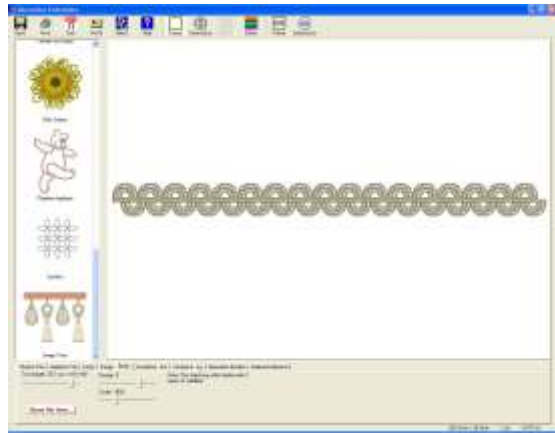
- Select the Heirloom Trim tab across the bottom of the screen
- Set Component at Straight
- Set Type at Crisscross
- Set Length at 2.5 cm = 1”
- Set Border at 2.0 mm
- Set Rib Height at 0.6 cm = (1/4)”
- Set Rib spacing at 0.6 cm = (1/4)”
- Set Rib thickness at 2.1 mm
- Set Trim at 5
- Set Arc at 0%
- Set Repeat at 6




13. Click the Save  icon. Name the file trim 5 and save it in your machine format.

14. For the sixth row of trim:

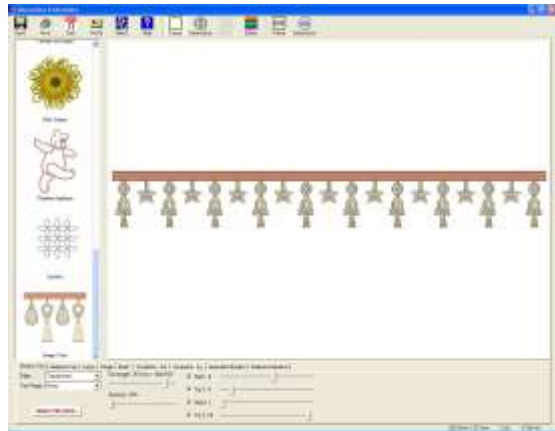
- Select the Braid tab across the bottom of the screen
- Set the trim length to fill your hoop
- Set Design at 9
- Set Scale at 100%




15. Click the Save  icon. Name the file trim 6 and save it in your machine format.

16. For the seventh row of trim:

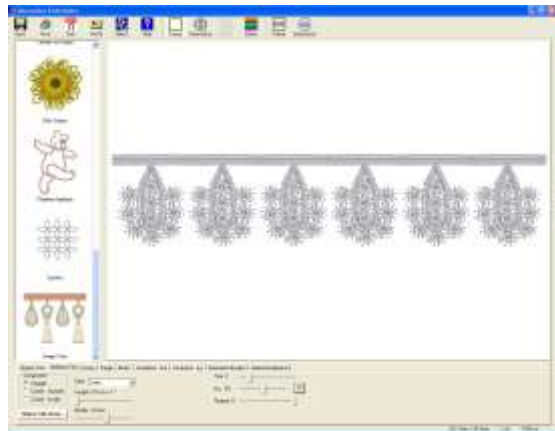
- Select the Charms tab across the bottom of the screen
- Set the trim length to fill your hoop
- Set Edge at Topstitched
- Set Top Fringe at None
- Set Spacing at 20%
- Set Mid 1 at 9
- Set Tip 1 at 4
- Set Mid 2 at 1
- Set Tip 2 at 29



17. Click the Save  icon. Name the file trim 7 and save it in your machine format.

18. For the eighth row of trim:

- Select the Heirloom Trim tab across the bottom of the screen
- Set Component at Straight
- Set Type at Satin
- Set Length at 2.5 cm = 1"
- Set Border at 3.0 mm
- Set Trim at 5
- Set Arc at 0%
- Set Repeat at 6



19. Click the Save  icon. Name the file trim 8 and save it in your machine format.

### **At the Baby Lock Sewing and Embroidery Machine:**

1. Hoop two layers of stabilizer; load the first design to your embroidery machine and sew.
2. In your machine edit mode, copy and paste the design so you have at least 18" of the trim or until your hoop is full.
3. Repeat step 1 for all of the designs.
4. Rinse all of your trims and allow them to dry. Once dry, press.

5. Follow the instructions found in *Easter Egg Table Décor* for cutting the egg shape from the batik fabric.
6. Pin your rows of trim in place and stitch using the monofilament thread.
7. Finish assembling your Egg following the instructions in the book.

**Your Email Could Use A Little Embroider-E**



Subscribe to the only embroider e-news devoted to embroidery software today :

**Designer's Gallery®**  
Lets Embroidery Designs Work For You

For other exciting projects like this one, visit our Web site at [www.designersgallerysoftware.com](http://www.designersgallerysoftware.com)!